



Year Two Weekly Newsletter
Week Ending: Friday 24th March

Dear Parents and Carers,

The notes about our maths information evening were emailed out as a link. It has come to our attention that some of you find it difficult to open the link so we have added the notes to our website: Year groups/Year2/Mathematics- bottom of this page as an attachment. Hope you will be able to access it this time.

A payment has been set up on the gateway for our school visit to South Angle farm park on the 27th of April 2023. To cover the cost of the trip, the entrance fee and the coach fee, we would like to ask parents for a contribution of £16.50. If this causes you any financial difficulties, please talk to your child's class teacher. Payment can be made online or via the office. Thank you. We would also like to take with us some parent volunteers. If you can help on the day, please speak to your child's teacher. There is no cost for volunteers but they still need to pay for their child's trip. Thank you for your support.

Literacy Poetry.	Numeracy Telling the time: focusing on quarter to/quarter past. Children will also be doing SATs practise tests this week.	Topic In Art we will be doing observational drawing of flowers and printing. Our outdoor PE topic is: Outdoor Adventure and our indoor PE unit is: Mini Muay Thai. In Geography we will revisit the 4 countries of the UK, famous landmarks and we will be measuring rainfall. In RE we are starting to talk about Sikhism. In Science we are exploring plants. In Music we are learning new songs and playing various musical instruments. In ICT we are painting pictures.
----------------------------	---	--

Homework

Please complete homework in the homework book and make sure your child hands it in no later than Wednesday each week. Marked books will be returned to them on Friday each week.

Reading	CLIC Learn-its
----------------	-----------------------

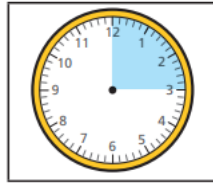
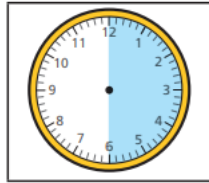
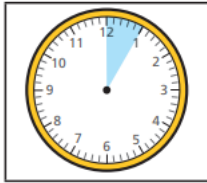
Please read with your child regularly and fill in the reading chart.	5 times tables. Counting in 2's, 10's and 3's.
Spelling Children will have their next spelling test on Friday (31 st March) These are the words they will be tested on: prince, princess, door, floor, autumn	Maths activity: Telling the time. See separate sheet at the bottom of the page. Children have taken home a print-out of this sheet.

Additional Homework Activities
















1. In Science we are learning about plants. Can you plant something at home and write a set of instructions about it?
2. Draw a picture of your favourite plant and label the different parts. (root, stem, bud)
3. In Maths we are learning about shape. Go on a shape hunt around your house. Can you find any objects that are; cube or cuboid shaped, cones, cylinders, pyramids, spheres or prisms. What shape are the faces on these 3D shapes? i.e. a cube has six square faces.
4. In music we are listening to reggae music. Listen to a piece of reggae and write down your thought and feelings.

Homework

How many minutes do the shaded parts show? Write it under each clock.



How long did the journey to school take to these children?

Name of child	Left home	Arrived at school	Journey time
 Annie			30 minutes
 Alex			
 Jack			
 Mo			20 minutes
 Dexter			15 minutes

