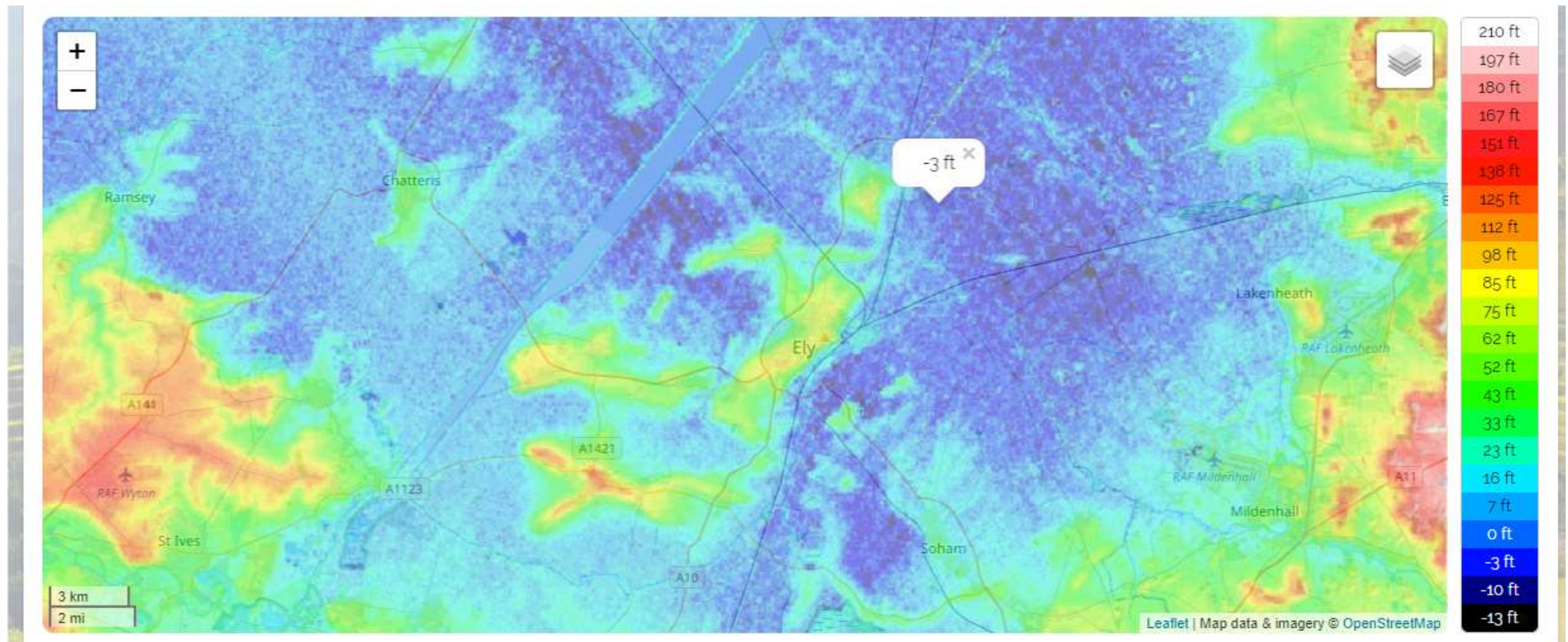


On this map, colour is used to show how high the land is. The bluer the colour, the lower the land. The redder and paler red the colour, then the higher the land.

Look at the map of Ely and find the cathedral. Is this in the higher or lower part of Ely, according to the map? Find the river. Is that on high land or low land?

Now look at the next map. This shows Ely in the Fens. What do you notice about the colours?



You might now be able to explain why it is that the cathedral can be seen from a long way away.

You can play around with these maps and see how they fit together on <https://en-gb.topographic-map.com/maps/dsm/Ely/>

Before the Fens were drained, the land around Ely was marshy and swampy. Ely could only be reached safely by small boats and the marshland was dangerous to cross by foot. The Isle of Ely is an area that is higher than the swampy land around it and so was an obvious (and dry!) place to build a settlement. The river could provide fresh water for drinking for people and animals, a place to fish and a way to travel and transport goods. The monks and nuns who founded the monastery in Ely would understand the benefits of building on the higher land, up above the marsh land.

When the cathedral was built, the Norman King William and his powerful knights had wanted to conquer the whole of the land, after battles to invade from Normandy in France, in 1066. After the wars, they built castles and large cathedrals to show the local people how powerful and important they were. The cathedral was built as part of this conquest of the area by the Norman King William I. It was built on the high land where the settlement had already been established. The fact it could be seen from miles away sent a powerful message to everyone in the area.

In your homework book, have ago at answering these questions. Use full sentences.

Why is the Isle of Ely called an isle when it is nowhere near the sea?

Where is the cathedral built in relation to the river?

Why is it possible to see Ely Cathedral from a distance of about 20 miles away?

What benefits were there to building the settlement of Ely on the Isle of Ely?